

Mindbenz Olympiad of Science (MOS)

Sample Paper

Class - 3

Maximum Marks: 40

Time Allowed – 45 Minutes

Section: A Concept Check (10 Questions × 1 mark = 10 marks)

1. Which of the following is a submerged aquatic plant?

- A. Water hyacinth
- B. Lotus
- C. Hydrilla
- D. Cactus



2. Which organ helps in pumping blood in the human body?

- A. Brain
- B. Lungs
- C. Heart
- D. Liver



3. Which force pulls objects towards the Earth?

- A. Magnetic force
- B. Frictional force
- C. Muscular force
- D. Gravitational force

4. Assertion: Bones and muscles help us in movement.

Reason: Muscles alone are enough for body movement.

- A. Both Assertion and Reason are true and Reason is the correct explanation.
- B. Both Assertion and Reason are true but Reason is not the correct explanation.
- C. Assertion is true but Reason is false.
- D. Assertion is false but Reason is true.

5. In case of a minor burn, you should:

- A. Apply toothpaste
- B. Rub with cotton
- C. Wash with cold water
- D. Cover with cloth immediately

6. TV and radio are forms of:

- A. Postal communication
- B. Non-verbal communication
- C. Private communication
- D. Mass communication



7. The changing shape of the moon is called:

- A. Eclipse
- B. Phases
- C. Revolution
- D. Rotation

8. Which layer of soil contains humus?

- A. Bedrock
- B. Subsoil
- C. Topsoil
- D. All of these



9. A solution is formed when

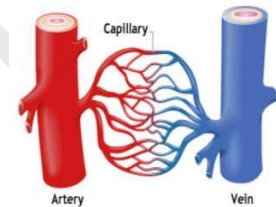
- A. Sand is mixed with water
- B. Salt is dissolved in water
- C. Oil is mixed with water
- D. None of these

10. Match the items in Column A with their correct functions in Column B:

- | Column A | Column B |
|----------------|-------------------------------|
| A. Arteries | 1. Carry oxygenated blood |
| B. Veins | 2. Carry deoxygenated blood |
| C. Capillaries | 3. Connect arteries and veins |
| D. Heart | 4. Pumps blood |

Choose the correct option:

- A. A-2, B-1, C-3, D-4
- B. A-1, B-2, C-3, D-4
- C. A-3, B-2, C-1, D-4
- D. A-1, B-3, C-2, D-4



Section: B Application Zone (10 Questions × 1 mark = 10 marks)

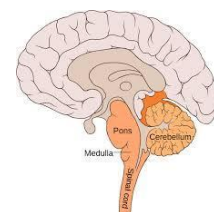
11. Which plant has breathing roots to survive in marshy areas?

- A. Neem
- B. Banyan
- C. Mangrove
- D. Tulsi



12. Which part of the brain controls balance and movement?

- A. Cerebrum
- B. Cerebellum
- C. Medulla
- D. Spinal Cord



13. Which of these is NOT a method of preserving food?

- A. Drying
- B. Cooking

- C. Freezing
- D. Pickling

14. Match the joints in Column A with their correct functions from Column B:

Column A Column B

- A. Ball & socket 1. Elbow movement**
- B. Hinge joint 2. Neck rotation**
- C. Pivot joint 3. Shoulder movement**
- D. Gliding joint 4. Wrist movement**

Choose the correct option:

- A. A-1, B-2, C-4, D-3
- B. A-3, B-1, C-2, D-4
- C. A-2, B-3, C-1, D-4
- D. A-4, B-1, C-3, D-2

15. Match the tool with its correct use:

Column A Column B

- A. Thermometer 1. Measures temperature**
- B. Barometer 2. Measures air pressure**
- C. Compass 3. Shows direction**
- D. Stethoscope 4. Checks heartbeat**

Choose the correct option:

- A. A-1, B-2, C-3, D-4
- B. A-2, B-1, C-3, D-4
- C. A-1, B-3, C-2, D-4
- D. A-4, B-1, C-3, D-2



16. What is the primary function of the respiratory system in humans?

- A. To digest food
- B. To circulate blood
- C. To exchange gases (oxygen and carbon dioxide)
- D. To excrete waste

17. Which type of house is commonly found in cold regions?

- A. Igloo
- B. Hut
- C. Skyscraper
- D. Tent



18. What happens during the process of evaporation?

- A. Liquid turns into gas
- B. Gas turns into liquid
- C. Solid turns into liquid
- D. Solid turns into gas

19. What happens during the process of sublimation?

- A. Liquid turns into gas
- B. Gas turns into liquid
- C. Solid turns into liquid
- D. Solid turns into gas

20. What is the primary cause of global warming?

- A. Deforestation
- B. Burning of fossil fuels
- C. Volcanic eruptions
- D. All of these



Section: C: Higher Order Thinking (10 Questions × 2 marks = 20 marks)

21. Which of the following is an example of mass communication?

- A. Telephone call
- B. Face-to-face conversation
- C. Television broadcast
- D. Email



22. Which of the following is NOT a safety rule to follow while crossing the road?

- A. Look both ways before crossing.
- B. Use pedestrian crossings.
- C. Run across the road to save time.
- D. Wait for the green pedestrian signal.



23. Which of the following is a characteristic of a lunar eclipse?

- A. The Moon comes between the Earth and the Sun.
- B. The Earth comes between the Sun and the Moon.
- C. The Sun comes between the Earth and the Moon.
- D. The Moon is closer to the Earth than usual.

24. Which of the following is a property of solids?

- A. They have a fixed shape and volume.
- B. They flow easily.
- C. They take the shape of their container.
- D. They have no fixed volume.

25. Assertion (A): We wear woollen clothes in winter to keep ourselves warm.

Reason (R): Wool traps air between its fibres, which acts as an insulator.

Options:

- A. Both A and R are true, and R is the correct explanation of A.
- B. Both A and R are true, but R is not the correct explanation of A.
- C. A is true, but R is false.
- D. A is false, but R is true.

26. Assertion (A): Creepers have weak stems and spread along the ground.

Reason (R): Creepers lack strong support tissues, which limits their ability to grow upright.

Options:

- A. Both A and R are true, and R is the correct explanation of A.
- B. Both A and R are true, but R is not the correct explanation of A.
- C. A is true, but R is false.



D. A is false, but R is true.

27. Which of the following animals is an example of an amphibian?

- A. Frog
- B. Dolphin
- C. Eagle
- D. Bat



28. Which of these best explains why a toy car stops after being pushed on carpet?

- A. Lack of energy
- B. Friction from the carpet
- C. Magnetic pull
- D. Gravitational force

29. Riya eats chips and cola every day but feels tired easily. Which food group is she missing?

- A. Fats
- B. Carbohydrates
- C. Proteins
- D. Vitamins and minerals

30. A penguin lives in Antarctica, has thick skin, and cannot fly. What kind of adaptation does this show?

- A. Structural for flight
- B. Behavioural for swimming
- C. Structural for cold survival
- D. Functional for tree-living



ANSWER KEY

- | | |
|------|------|
| 1.C | 16.C |
| 2.C | 17.A |
| 3.D | 18.A |
| 4.C | 19.D |
| 5.C | 20.D |
| 6.D | 21.C |
| 7.B | 22.C |
| 8.C | 23.B |
| 9.B | 24.A |
| 10.B | 25.A |
| 11.C | 26.A |
| 12.B | 27.A |
| 13.B | 28.B |
| 14.B | 29.D |
| 15.A | 30.C |
-